

# Combination Analysis & Individual Stocks Analysis of Japanese Institutional Investors

Katsuhiko Nakamura  
(MFTA)

# Contents

## *I. Composite Chart .....page 2-7*

*Analyzed monthly ,weekly, and daily TOPIX*

## *II. U-Curved Chart .....page 8-16*

*1-MITSUMI ELETRIC(6767)*

*2-NIPPON STEEL(5401)*

*3-MITSUBISHI ESTATE(8802)*

*4-TOKYO ELECTRIC POWER(9501)*

## *III. Conclusion .....page 17,18*

# I .Composite Chart

## Combination analysis for Indices

“Composite Chart” consists of . . .  
5 or more Indicators

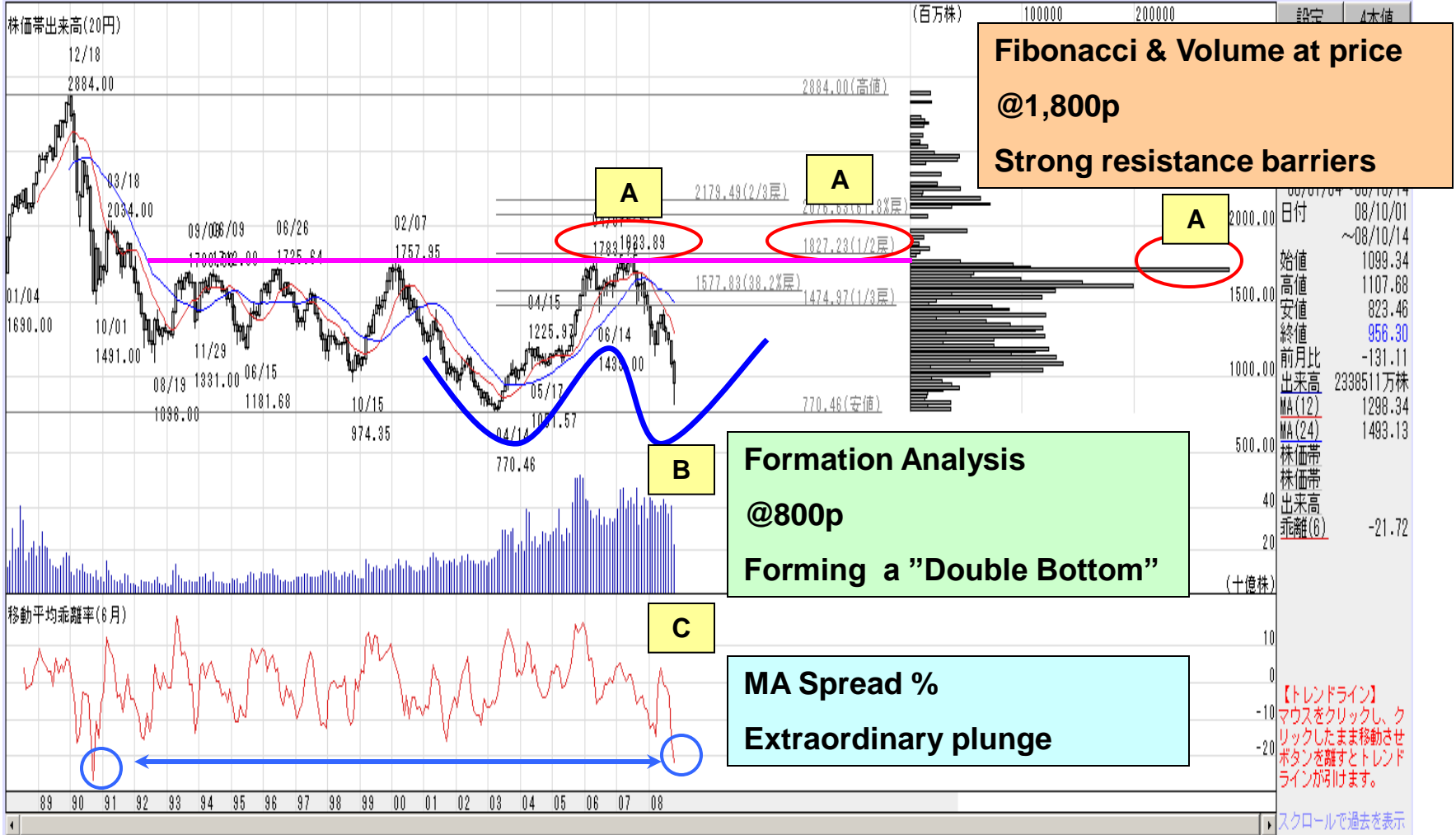
Sample

- ① Ichimoku
- ② Bollinger Bands
- ③ Fibonacci
- ④ HV
- ⑤ Volume at Price . . . etc

**In the order of . . .**

**Monthly-Weekly-Daily**

TOPIX - Monthly, 1988 to 2008, (As of October 2008)  
Fibonacci & Volume at Price & MA Spread %

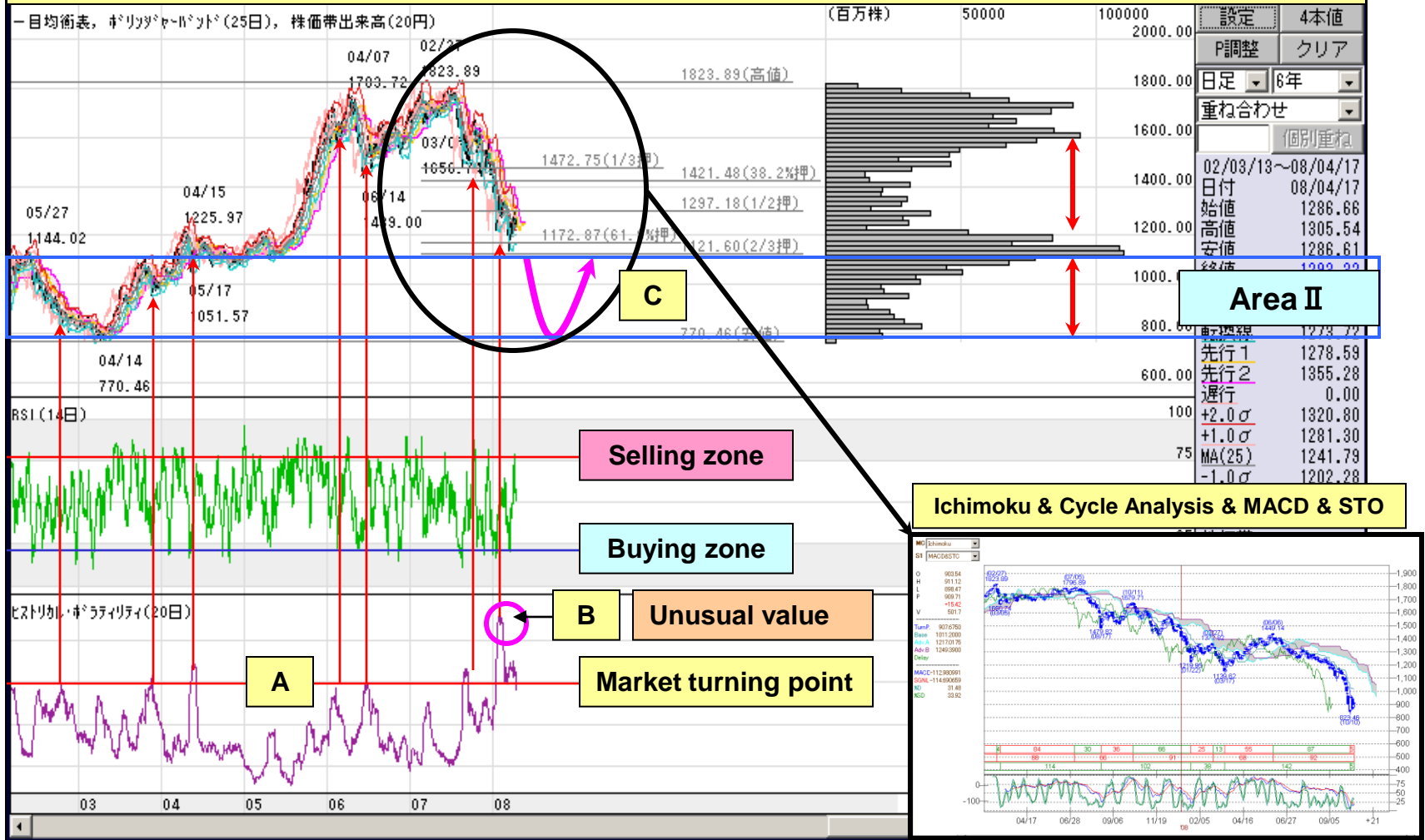


TOPIX - Weekly, 1998 to 2008, (As of October 2008)  
Ichimoku & Bollinger Bands & Fibonacci & Volume at Price & RSI



# TOPIX - Daily, 2002 to 2008, (As of April 2008)

## Ichimoku & Bollinger Bands & Fibonacci & Volume at Price & RSI & HV



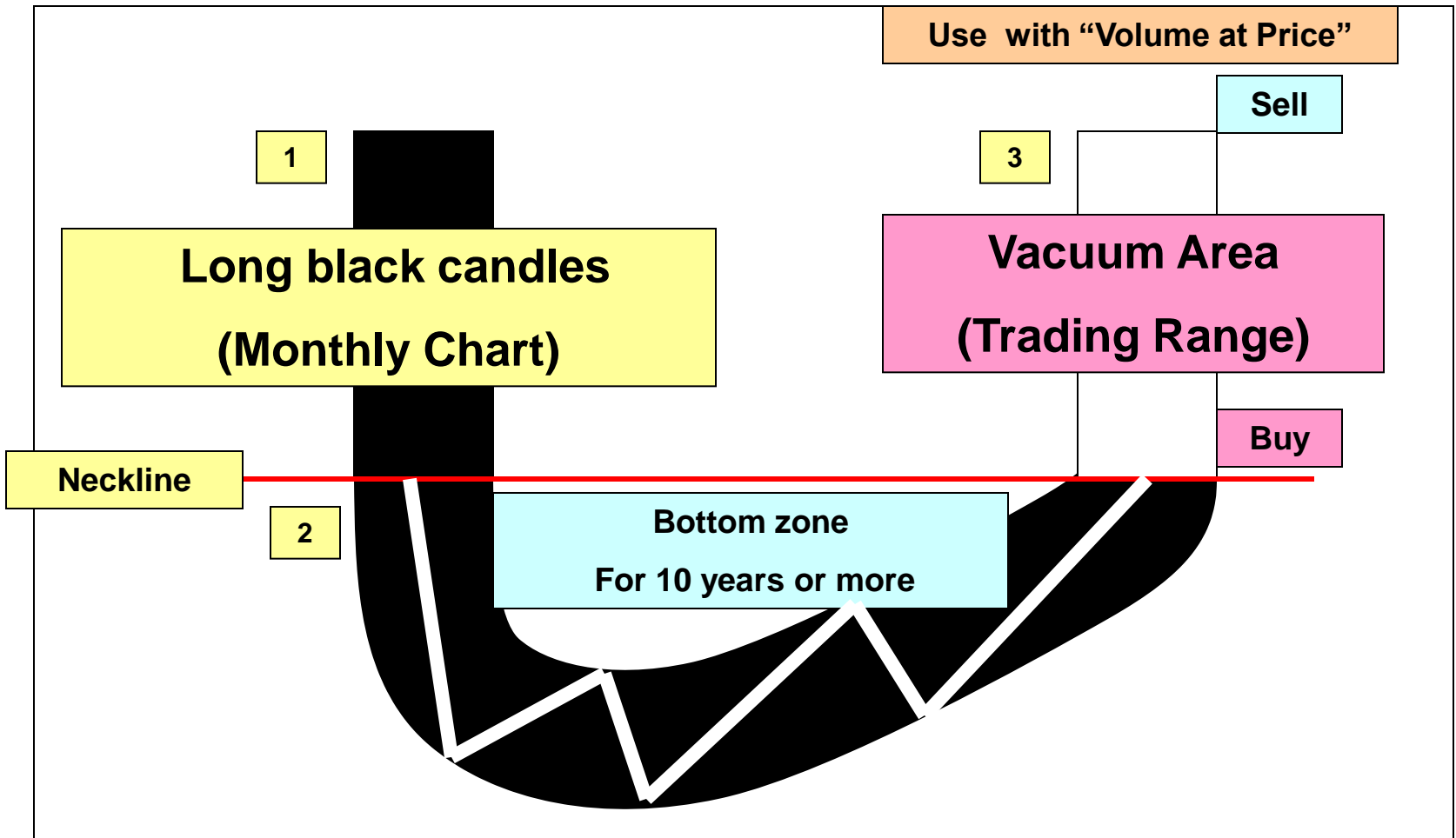
**Advise to wait for the occurring 5 indicators BUY or SELL signal before trading.**

# II .U-Curved Chart

Efficient technique  
for the Individual stocks



# How to use “U-Curved Chart”



# Strategy

## 1.Trading Signal

Breaking above the bottom of range by Monthly Close Price

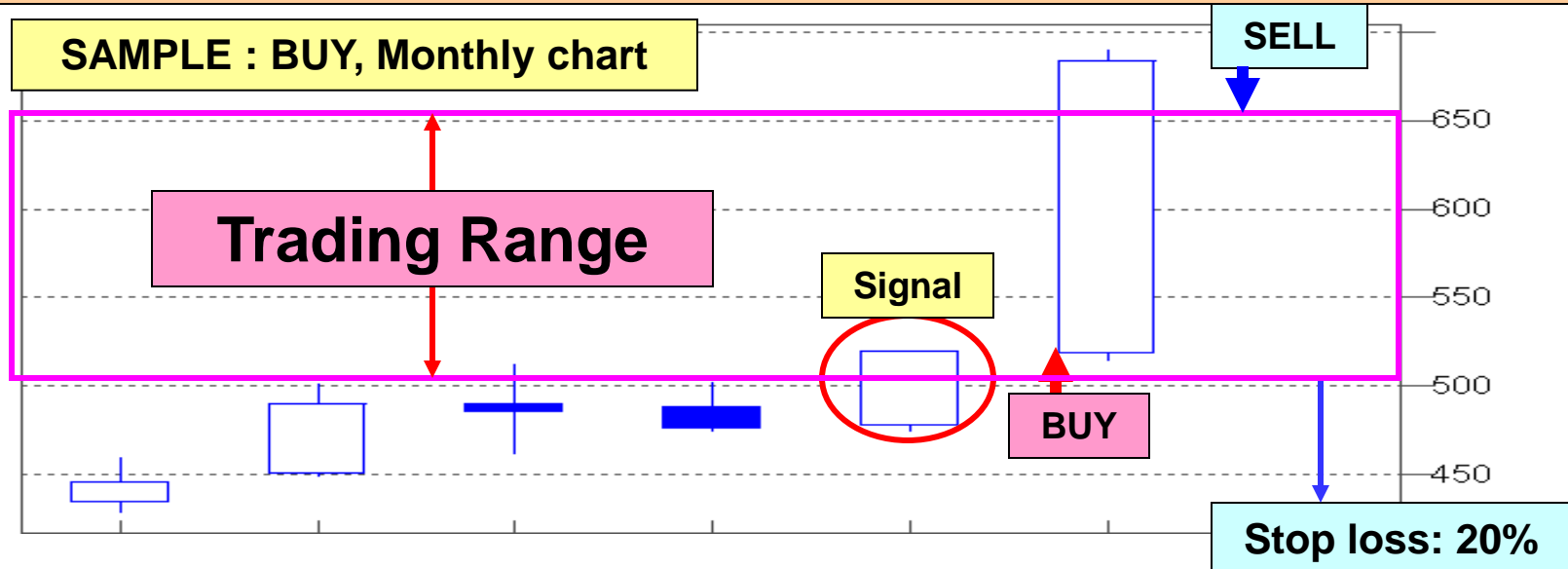
## 2.Entry Point

At next month's Opening Price

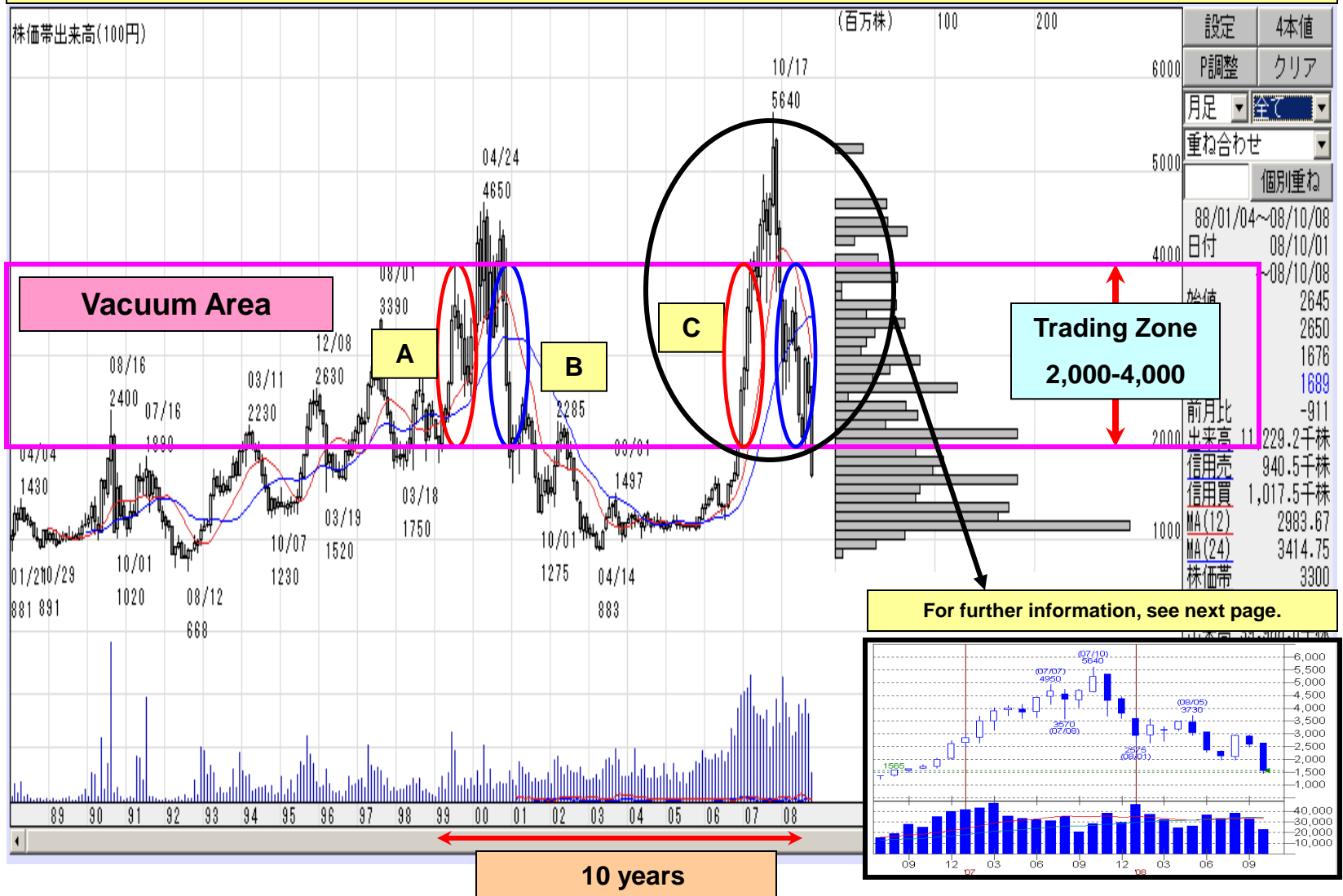
## 3.Trading Rule

Gain ··· Take profits at the top of range

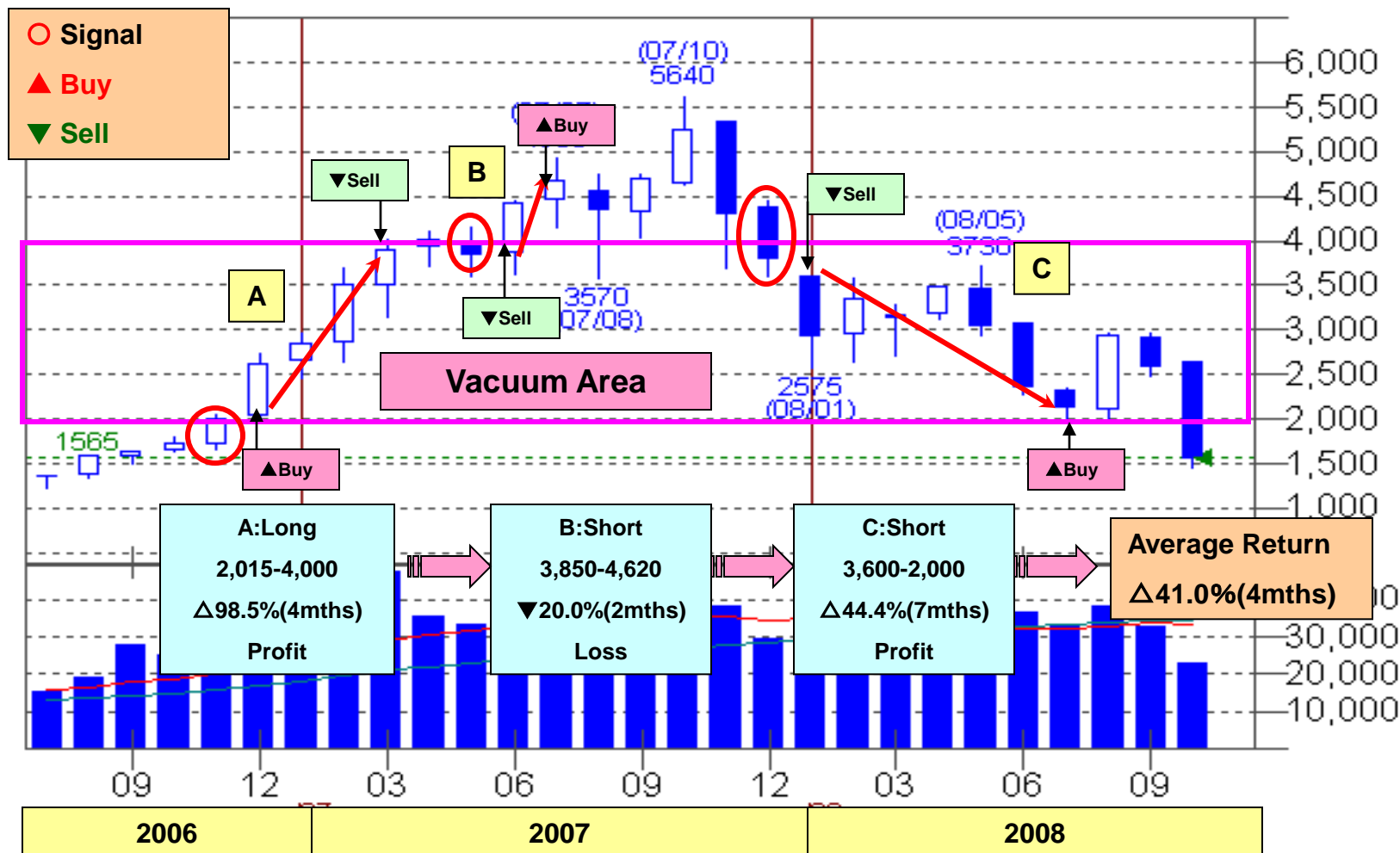
Loss ··· Use a stop loss 20%



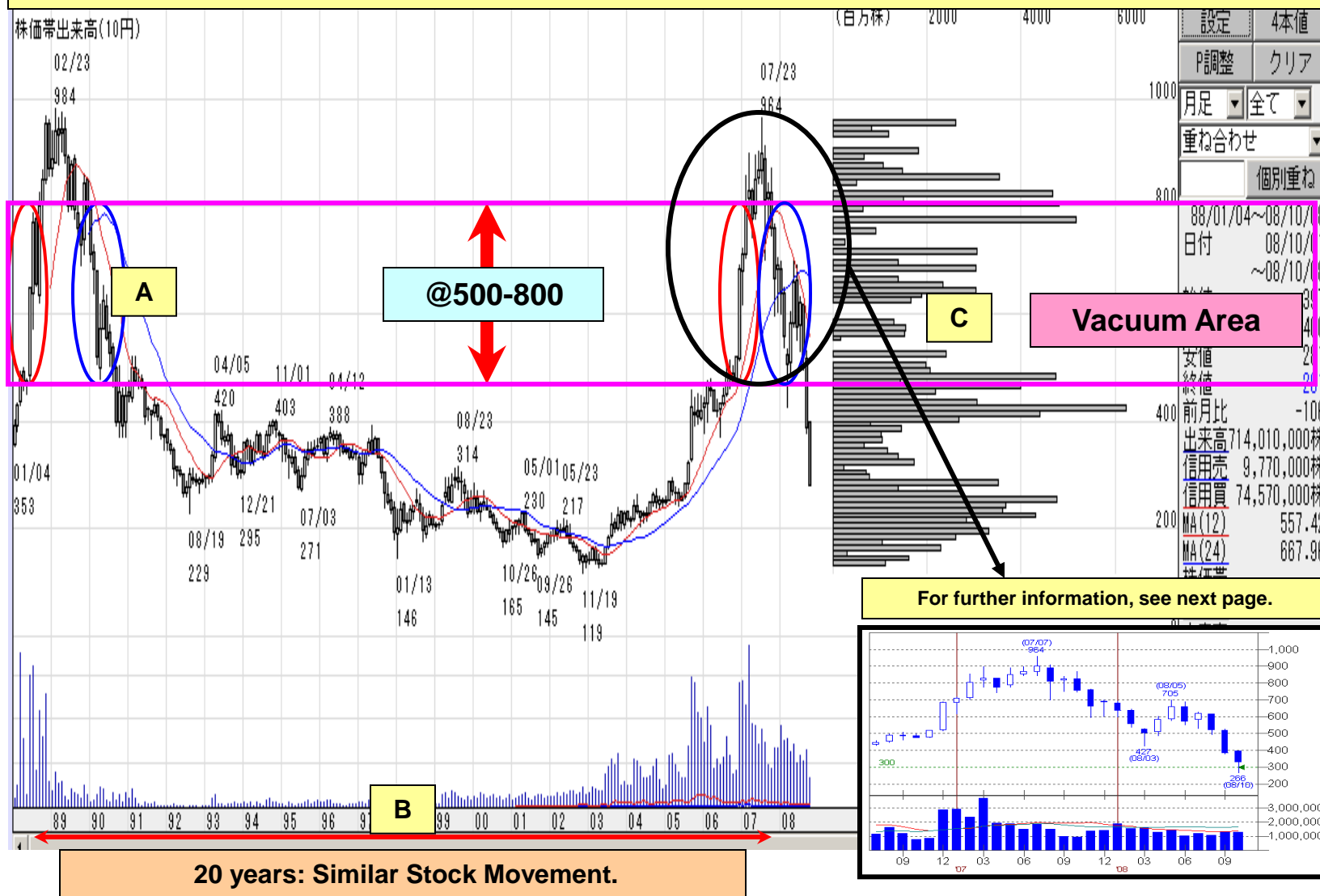
# Mitsumi Electric (6767) - Monthly 1988-2008, (As of October 2008)



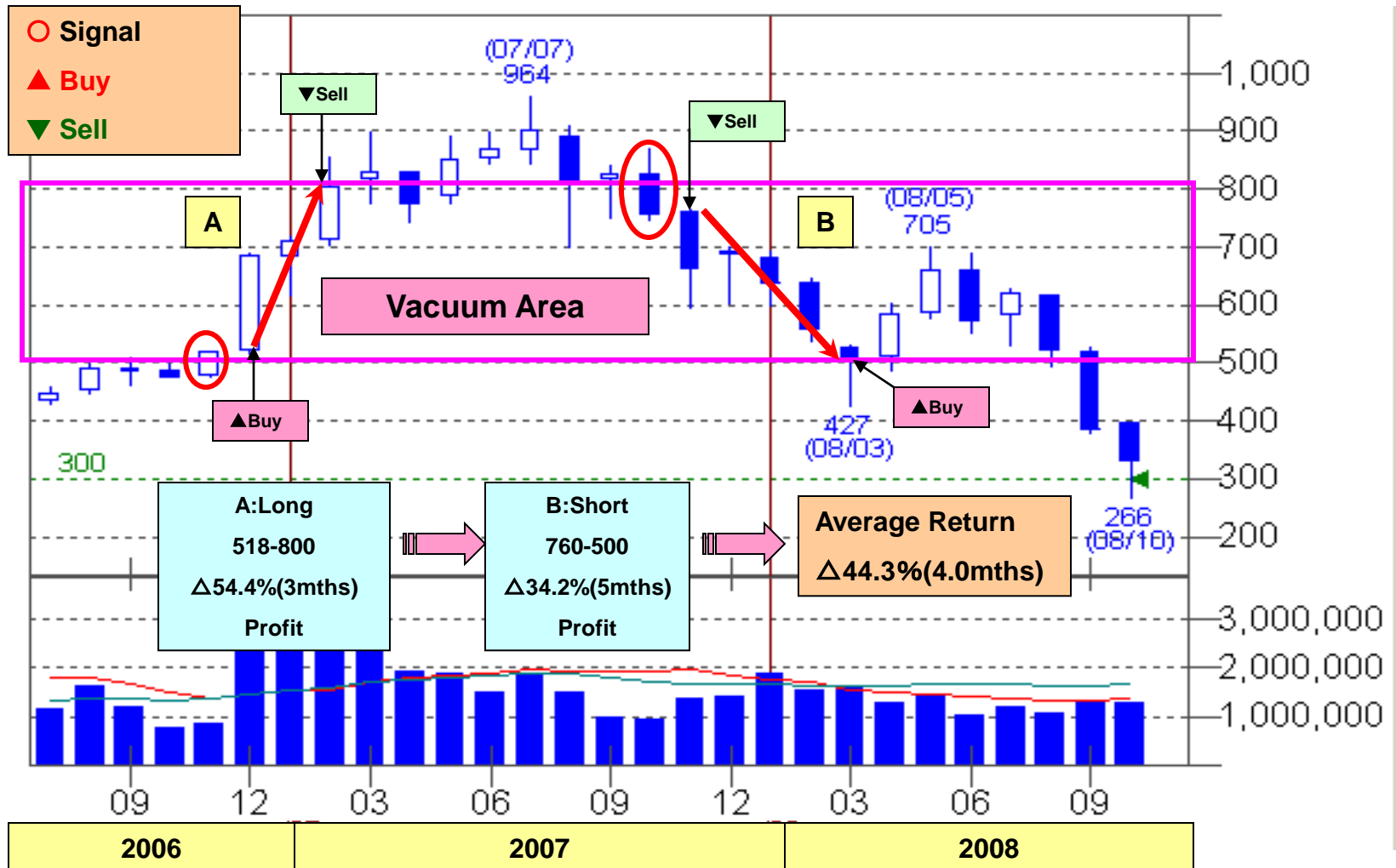
# Mitsumi Electric (6767) – Monthly 2006-2008, (As of October 2008)



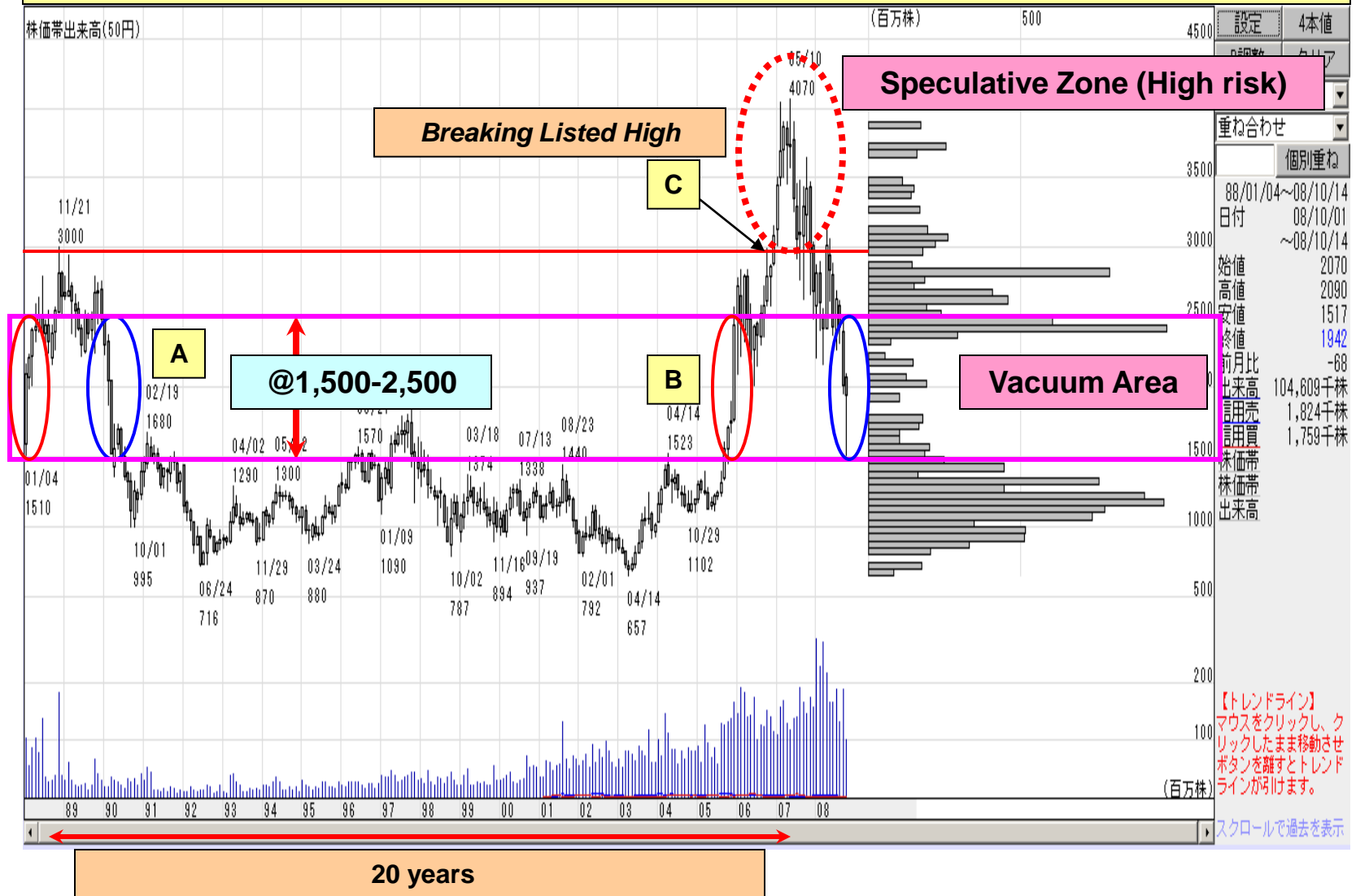
# Nippon Steel Corp (5401) - Monthly 1988-2008, (As of October 2008)



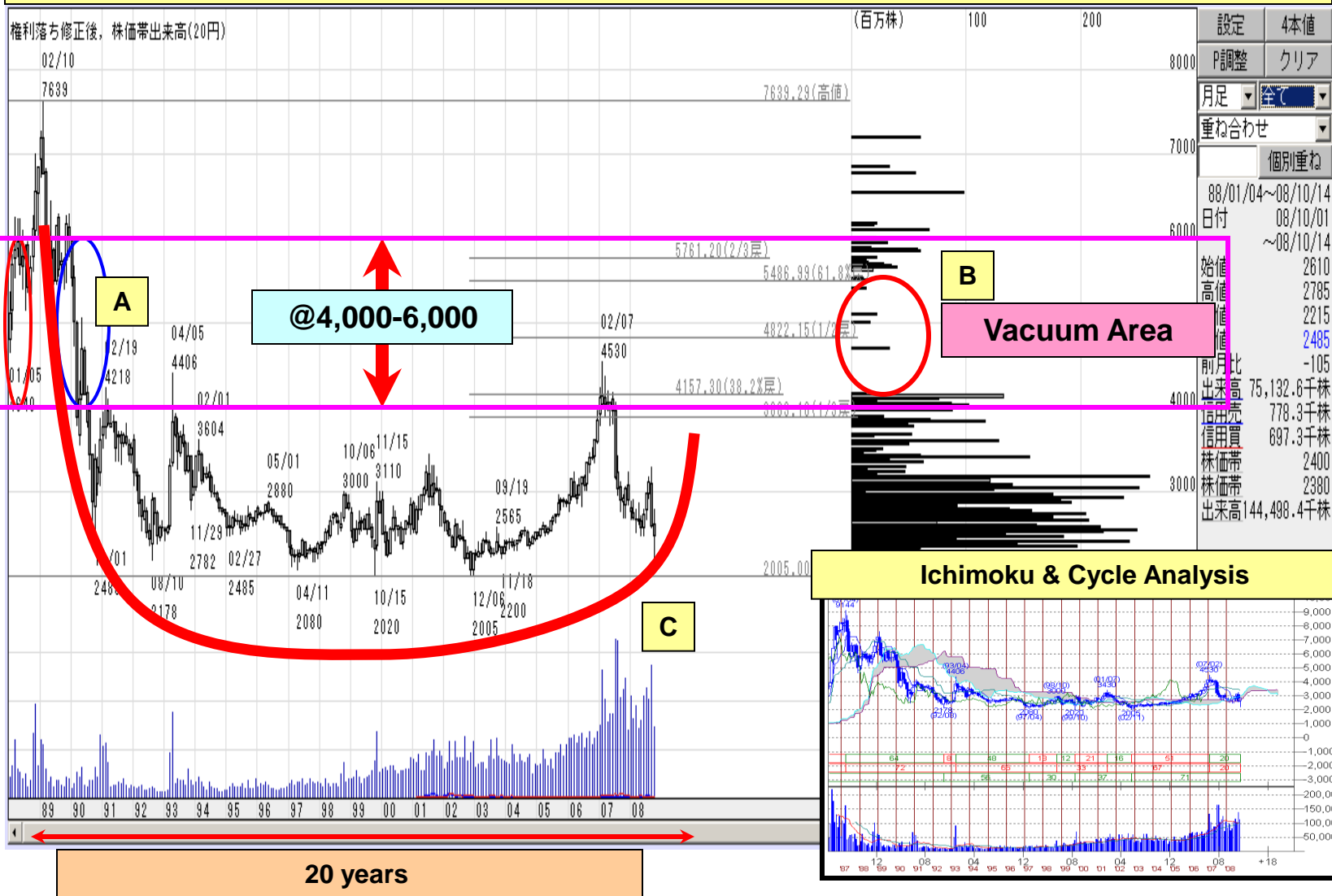
# Nippon Steel Corp (5401) - Monthly, 2006-2008, (As of October 2008)



# Mitsubishi Estate (8802) - Monthly, 1988-2008, (As of October 2008)



Tokyo Electric Power (9501)- Monthly,  
1988-2008, (As of October 2008)





# Conclusion

## ① Composite Chart

- Combination Analysis for Indices
- Importance of Volume at Price
- From Monthly-Weekly-to Daily Basis

## ② U-Curved Chart

- Creative method for using Monthly Chart
- Importance of Monthly Close Price
- Anomaly(Symmetrical Chart) of Individual Stocks

# Wise Saying

As for the human memory on the finance,  
it is a limit 20 years.

John Kenneth Galbraith

“People repeat the similar investment activities.”